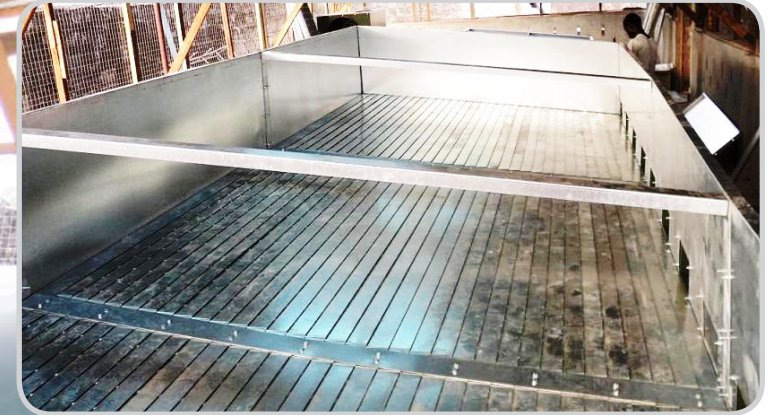


TROPICAL FARMS LTD, KENEMA, SIERRA LEONE
 TWIN BED BATCH DRIER - INDIRECT DIESEL OIL FURNACE

▼ The BD7500/2E during site assembly



▼ Batch drier ready to fill



▼ Batch drier showing fan



◀ Fan and heat exchanger

TROPICAL FARMS LTD, KENEMA, SIERRA LEONE TWIN BED BATCH DRIER - INDIRECT DIESEL OIL FURNACE

The inclined bed and multiple outlets means that unloading is quick and simple to perform ▼



Oil fired burner via heat exchanger - to ensure purity of hot air for drying ▼



The two beds left and right with the air splitter box from the fan ►



◀ Filling and spreading cocoa

Testing the cocoa moisture content ▼

